



The Gillford Centre

ACCESSIBILITY PLAN

2021 – 2024

Approved by¹	
Name:	Rachel Clark
Position:	Headteacher
Signed:	
Date:	September 2021
Review date²:	2024

REVIEW SHEET

The information in the table below details earlier versions of this document with a brief description of each review and how to distinguish amendments made since the previous version date (if any).

Version Number	Version Description	Date of Revision
1	Original	March 2012
2	Front Cover ONLY updated to take account of revised Statutory Policy Guidance issued by the DfE	January 2013
3	Reformatted only	February 2014
4	Reformatted only	February 2015
5	Reformatted only	May 2017
6	Very minor updates AND 'Date Complete' added to all Action Plans (Appendices)	September 2018
7	Reviewed – links checked	October 2019

CONTENTS

1.	INTRODUCTION	2
2.	DEFINITION OF DISABILITY	2
3.	REASONABLE ADJUSTMENTS	4
4.	AIMS OF THE ACCESSIBILITY PLAN	4
5.	KEY OBJECTIVES.....	5
6.	CONTEXTUAL INFORMATION.....	5
7.	DEVELOPMENT.....	5
7.1	The Purpose and Direction of the School’s Plan: Vision and Values	6
7.2	Information from Pupil Data and School Audit	6
7.3	Views of those Consulted during the development of the Plan.....	7
8.	SCOPE OF THE PLAN	7
8.1	Increasing the extent to which disabled pupils can participate in the school/setting curriculum.....	7
8.2	Improving the physical environment of the school/setting to increase the extent to which disabled pupils can take advantage of education and associated services	7
8.3	Improving the delivery to disabled pupils of information that is provided in writing for pupils who are disabled.....	8
8.4	Financial Planning and Control	8
9.	IMPLEMENTATION	9
9.1	Management, Coordination and Implementation	9
9.2	Monitoring	9
9.3	The role of the LA in increasing accessibility	9
9.4	Accessing the School’s Plan	Error! Bookmark not defined.
10.	RELATED POLICIES	Error! Bookmark not defined.
APPENDIX A(i)	- Plan (Improving Access to the Curriculum)	
APPENDIX A(ii)	- Plan (Improving Access to the Physical Environment)	
APPENDIX A(iii)	- Plan (Improving Access to Written Information)	

This page is intentionally blank for printing purposes

1. INTRODUCTION

The Equality Act 2010 replaced all previous equality legislation such as the Race Relations Act, Disability Discrimination Act (DDA) and Sex Discrimination Act.

The Equality Act 2010 provides a single, consolidated source of discrimination law, covering all the types of discrimination that are unlawful. It simplifies the law by removing anomalies and inconsistencies that had developed over time in the existing legislation, and it extends the protection from discrimination in certain areas.

The law on disability discrimination is different from the rest of the Act in a number of ways. The overriding principle of equalities legislation is generally one of equal treatment. However the provisions in relation to disability are different in that you may, and often must, treat a disabled person more favourably than a non-disabled person.

There are some minor differences around disability in the new Act when compared with the previous legislation.

- The Equality Act does not list the types of day to day activities which a disabled person must be unable to carry out to meet the definition
- Failure to make a reasonable adjustment can no longer be justified. The fact that it must be 'reasonable' provides the necessary test.
- Direct discrimination against a disabled person can no longer be justified (bringing it into line with the definition of direct discrimination generally).
- From September 2012 schools and local authorities are under a duty to supply auxiliary aids and services as reasonable adjustments where these are not being supplied through a statement of SEND.

As in previous legislation a school/setting must not discriminate against a pupil because of something that is a consequence of their disability.

It is unlawful for a school/setting to treat a disabled pupil unfavourably. Such treatment could amount to:

- Direct discrimination
- Indirect discrimination
- Discrimination arising from a disability
- Harassment

Direct discrimination can never be justified but a school/setting could justify indirect discrimination against a disabled pupil, and discrimination arising from a disability if the discrimination is the result of action that is a 'proportionate means of achieving a legitimate aim'.

2. DEFINITION OF DISABILITY

Equality Act 2010: a person has a disability if:

- they have a physical or mental impairment;
- the impairment has a substantial and long-term adverse effect on their ability to perform normal day-to-day activities.

For the purposes of the Act, these words have the following meanings:

- 'substantial' means more than minor or trivial;
- 'long-term' means that the effect of the impairment has lasted or is likely to last for at least twelve months (there are special rules covering recurring or fluctuating conditions);
- 'normal day-to-day activities' include everyday things like eating, washing, walking and going shopping.

People who have had a disability in the past that meets this definition are also protected by the Act.

Progressive conditions considered to be a disability

There are additional provisions relating to people with progressive conditions. People with HIV, cancer or multiple sclerosis are protected by the Act from the point of diagnosis. People with some visual impairment are automatically deemed to be disabled.

Conditions that are specifically excluded

Some conditions are specifically excluded from being covered by the disability definition, such as a tendency to set fires or addictions to non-prescribed substances.

It should be noted that this definition is *not just regarding physical difficulties* but also covers a wide range of:

- Sensory difficulties
- Learning difficulties
- Impairment resulting from, or consisting of, a mental illness

In addition there is a range of 'hidden impairments' such as

- Dyslexia
- Speech and Language Impairments
- Autism
- Attention Deficit Hyperactivity Disorder (ADHD)

Impairment does not itself mean that a pupil is disabled but rather it is the effect on the pupil's ability to carry out normal day-to-day activities in one or more of the following areas that has to be considered:

- Mobility
- Manual dexterity
- Physical coordination
- Continence
- Ability to lift, carry or otherwise move everyday objects
- Speech, hearing or eyesight
- Memory or ability to concentrate, learn or understand
- Perception of risk of physical danger

3. REASONABLE ADJUSTMENTS

We have a duty to make reasonable adjustments for disabled pupils:

- When something we do places a disabled pupil at a substantial disadvantage to other pupils, we must take reasonable steps to avoid that disadvantage;
- We will be expected to provide an auxiliary aid or service for a disabled pupil when it would be reasonable to do so, and where such an aid would alleviate any substantial disadvantage the pupil faces in comparison to his non-disabled peers.

A failure to make a reasonable adjustment can no longer be justified. The test is whether the adjustment is reasonable, and if it is then there can be no justification for why it is not made. We will not be expected to make adjustments that are not reasonable.

There is as yet no clarity on what may be 'reasonable' although the Code of Practice will include factors that should be taken into account. It will be for us to decide the reasonableness of adjustments based on the individual circumstances of each case. Factors to consider may include the financial or other resources available, the effectiveness of the adjustment, its effect on other pupils, health and safety requirements, and whether aids have been made available through the SEND route.

The reasonable adjustments duty is intended to complement the accessibility planning duties, and the existing SEND statement provisions, under which Local Authorities have to provide auxiliary aids and services where a statement details that provision. When a disabled pupil does not have a statement of SEND (or the statement does not provide the necessary aid) then the duty to consider reasonable adjustments and provide such auxiliary aids will fall to the school/setting.

As in the previous legislation we are not under a duty to make alterations to the physical environment though we should be planning to do so as part of our Accessibility planning.

4. AIMS OF THE ACCESSIBILITY PLAN

The planning duties on schools/settings and Local Authorities are the same as the duties in the previous DDA. Schools/settings are required to have an Accessibility Plan detailing how they will improve access to the physical environment, increase access to the curriculum for disabled pupils, and how they will improve the availability of accessible information to disabled pupils. The LA is required to have an Access Strategy.

In The Gillford Centre, we have a commitment to equal opportunities for all members of the school/setting community and our Accessibility Plan outlines our intention to remove barriers for disabled pupils and to:

- increase the extent to which disabled pupils can participate in the different areas of the national curriculum, increase access to extra-curricular activities and the wider school/setting curriculum;
- improve the physical environment of schools/settings to enable disabled pupils to take better advantage of education, benefits, facilities and services provided; and
- improve the availability of accessible information to disabled pupils.

Furthermore, under our equality duties, we intend to improve the physical environment of the school/setting to enable any disabled person (pupil, parent/carer, employees or visitor) to access facilities and services and improve the availability of accessible information to any disabled person.

This Accessibility Plan will, therefore, **begin the process of addressing the needs of disabled people** through specific targets.

It is a requirement that the school's/setting's accessibility plan is resourced, implemented and reviewed and revised as necessary. Attached is a set of action plans showing how the school/setting will address the priorities identified in the plan

Compliance with the disability duty under the Equality Act is consistent with the school's/setting's aims and Single Equality Scheme, and the operation of the school's/settings SEND policy.

The Action Plan for physical accessibility relates in part, to the Asset Management Plan (access section) of the School, which is undertaken regularly by the Local Authority. It may not be feasible to undertake some of the works during the life of this Accessibility Plan and therefore some items will roll forward into subsequent plans. The Plan will need to be revisited prior to the end of each first three-year plan period in order to inform the development of the new Plan for the following period.

We strive to ensure that the culture and ethos of the school/setting are such that, whatever the abilities and needs of members of the school/setting community, everyone is equally valued and treats one another with respect. Pupils should be provided with the opportunity to experience, understand and value diversity.

5. KEY OBJECTIVES

The key objectives of our Accessibility Plan are as follows:

- To reduce and eliminate barriers to access to the curriculum and to full participation in the school/setting community for pupils, and prospective pupils, with a disability.
- We are committed to providing a fully accessible environment which values and includes all pupils, staff, parents and visitors regardless of their education, physical, sensory, social, spiritual, emotional and cultural needs. We are committed to challenging negative attitudes about disability and accessibility and to developing a culture of awareness, tolerance and inclusion.
- We are committed to providing all pupils with a broad and balanced curriculum, differentiated and adjusted to meet the needs of individual pupils and their preferred learning styles; and we endorse the key principles in the National Curriculum Framework ([Click here to access](#)) which underpin the development of a more inclusive curriculum:
 - setting suitable learning challenges;
 - responding to a pupil's diverse learning needs;
 - overcoming potential barriers to learning and assessment for individuals and groups of pupils.

6. CONTEXTUAL INFORMATION

- The Gillford Centre, Upperby Road, Carlisle, CA2 4JE.

- The Gillford Centre is a Pupil Referral Unit offering education to Primary and Secondary students
- The Gillford Centre currently has 75 Students on roll (as at October 2021).
- The Gillford Centre building consists of single story buildings, two playgrounds and staff parking area. There are also two annexed classrooms, 2 portakabins and one double garage.

7. DEVELOPMENT

7.1 The Purpose and Direction of the School's Plan: Vision and Values

Our School/Setting:

- *has high ambitions for its disabled pupils and expects them to participate and achieve in every aspect of school life;*
- *is committed to identifying and then removing barriers to disabled students in all aspects of school life;*
- *values the individual and the contribution they make to all aspects of school life;*
- *will strive to ensure that its disabled pupils have access to all areas of the curriculum and teaching resources so as to develop fully in their education;*
- *acknowledges a commitment to embrace the key requirements set out in the National Curriculum Inclusion Statement;*
- *will continue to focus on removing barriers in every area of the life of the school;*
- *is committed to embracing equal opportunities for all members of the school community.*

7.2 Information from Pupil Data and School Audit

The very nature of the core work of The Gillford Centre means that the school population is generally transient. Also because we cover all Key Stages 1-4 and HHTS the population is adapted to meet the needs of each group/Key Stage.

The buildings are accessible for pupils with disability although in the past 15 years there has only been one youngster with a physical disability.

The HHTS staff are very knowledgeable and skilled at working with those pupils who have significant medical/mental health issues. We also work with a growing number of pupils with a diagnosis of autism.

Key starting points for the school's plan:

- The Gillford Centre has identified that we have, as at the start of the academic year 2021/2012, 16 students regarded as disabled under the terms of the DDA. These can be grouped as: hearing impaired, physical mobility problems (non-wheelchair users), visual impairment, Asperger's Syndrome, ADHD, Autistic, epileptic and SEMH. Some of these students attend our on-site specialist setting (Hospital and Home Tuition Service) where students are unable to access mainstream education due to significant illnesses requiring hospital treatment or are diagnosed with mental health disabilities.
- Our annual development plan takes into account the needs of our diverse student population as well as the needs of its wider community.
- A significant number of students with a disability currently in feeder nursery/primary schools who may wish to come here have been identified through dialogue with the Local Authority agencies tasked with supporting those students in its area with disabilities.

In order to ensure that our data is up to date and accurate we will:

- liaise with the Local Authority so as to identify and therefore plan a response to students with a disability well before they arrive;
- improve the information dissemination from our Learning Support facility;
- implement a system that allows parents to inform us if they themselves have a disability;
- identify early on in their school career any obstacles to the effective learning of disabled students;
- use all available data to inform the planning of individual student learning patterns;
- use information supplied via previous LA Asset Management/Accessibility Audits to assist us to develop an action plan to reduce obstacles for the school/setting community.

7.3 Views of those Consulted during the development of the Plan

- The views and aspirations of disabled pupils themselves;
- The views and aspirations of the families of disabled pupils;
- The views and aspirations of other disabled people or voluntary organisations;
- The priorities of the local authority;

We will:

- ensure the development of the plan involves coordination with the Local Authority in line with the LA Accessibility Strategy and ensure that we provide the best choices for students wanting to enrol here;
- consult the full Management Committee/SEND governor;
- consult staff including specifically SENCo, heads of year/department, safety committee;
- set up a structure to allow the views of students, both able and disabled to be taken into account;
- survey parents/carers to ascertain their views on our provision for disabled students and any developments they feel would be of use to the students and also offer parents alternative ways of answering the survey;
- involve outside agencies who already exist to assist disabled students in their education and future careers;
- ensure the views of ALL those consulted are taken into consideration and the plan modified where reasonable to meet the needs of stakeholders;

8. SCOPE OF THE PLAN

8.1 Increasing the extent to which disabled pupils can participate in the school/setting curriculum

- to investigate how the access to those areas of the curriculum that are normally difficult for disabled students to access can be improved;
- to further investigate what support or alternative approaches can be adopted to increase the choice/participation of disabled students;
- to investigate alternative provision/routes and collaboration that will assist disabled students to learn including liaison with the LA Special Educational Needs and Disabilities (SEND) Statementing and Provision Team.

We plan to increase access to the **curriculum** for pupils with a disability, expanding the curriculum as necessary to ensure that pupils with a disability are as, equally, prepared for life as are the able-bodied pupils. This covers teaching and learning and the wider curriculum of the school/setting such as participation

in after-school clubs, leisure and cultural activities or off-site visits. It also covers the provision of specialist **aids and equipment**, which may assist these pupils in accessing the curriculum. The school/setting will continue to seek and follow the advice of LA services, such as specialist teacher advisers and SEND inspectors/advisers, and of appropriate health professionals from the local NHS Trusts.

The Gillford Centre strives to help to improve access to a full, broad and balanced curriculum. It covers a range of elements including ensuring that teaching and learning is accessible through school and classroom organisation and support, especially deployment of staff, timetabling, curriculum options and staff information and training.

The Centre continually develops strategic responses to the varied behavioural needs of our students. Staff CPD ensures that we have the correct skill set to be able to meet the needs of students. We ensure that we have all the necessary systems in place to address absence and promote good attendance.

Those pupils with identified SEND have Individual Education Plans that are written with and shared by all teaching and support staff.

8.2 Specific strategies are being used and special groups of pupils within the Centre are created to meet their SEMH needs. In some cases, we have created very special groups and adapted our buildings to provide bespoke accommodation. Improving the physical environment of the school/setting to increase the extent to which disabled pupils can take advantage of education and associated services

- in consultation with the LA (where necessary and appropriate) investigate various improvements to the site;
- improve accessibility points to different curriculum areas;
- investigate ways of making the site more accessible to both disabled parents and adult users.

The Gillford Centre will take account of the needs of pupils and visitors with physical difficulties and sensory impairments when planning and undertaking future improvements and refurbishments of the site and premises, such as improved access, lighting, acoustic treatment and colour schemes, and more accessible facilities and fittings. This is required regardless of whether the school/setting has pupils or visitors with disabilities and is preparation for a situation when they do. A plan of the school building is attached to this policy document indicating access points for students or visitors with physical impairment.

8.3 Improving the delivery to disabled pupils of information that is provided in writing for pupils who are disabled

We will strive to:

- produce all school/setting literature at the correct font size to help visually impaired students;
- investigate alternative ways of providing access to information, software and activities;
- investigate ways of communicating effectively with disabled parents and carers and other disabled adult users of the site.

The Gillford Centre plans to improve the delivery of **written information** to pupils, staff, parents and visitors with disabilities. Examples might include handouts, timetables, textbooks and information about the school/setting and school events.

8.4 Financial Planning and Control

The Head teacher with Senior Management Team, together with the Finance Committee will review the financial implications of the School/Setting Accessibility Plan as part of the normal budget review process. The objective is that over time School/Setting Accessibility Plan actions will be integrated into the School/Setting Development Plan.

We will finance the plan by identifying costs and incorporating them into current and future budget commitments.

9. IMPLEMENTATION

9.1 Management, Coordination and Implementation

Our Leadership Team will undertake a disability audit using a cross section of staff, pupils and parents (refer to Section 7.3).

As a result of the audit, we shall:

- produce action plans, with definite time scales for the implementation of the actions implicit in the plan;
- plans to provides workshops so staff can understand and buy into the Accessibility Plan and not see it as a bolt on;
- present the plan to the governing body for their approval;
- modify the plan based on the views of stakeholders;
- review the plan and the associated action plans to see if milestones are being met. This plan will be reviewed and adjusted as necessary every three years.

9.2 Monitoring

We recognise that monitoring is essential to ensure that pupils with disabilities are not being disadvantaged, and that monitoring leads to action planning.

Governors will be required to comment in their annual report to parents on the accessibility plan and identify any revisions as necessary. Evaluation that may be useful to judge success may include:

- success in meeting identified targets;
- changes in physical accessibility of school/setting buildings;
- improved levels of confidence in staff in reducing the obstacles to success for pupils with additional needs;
- Ofsted inspections that identify higher levels of educational inclusion.

9.3 The role of the LA in increasing accessibility

The LA continues to support the Centre by making sure that all EHCP resources follow the child to the Centre. This resource can be used to create the correct staffing resource and equipment to meet pupils' needs.

The LA has funded the staffing for the Academic Year 2018-2019 a special group of three students all of whom have ASC and PDA.

9.4 Accessing the School's Plan

- Plans could be made to investigate symbol software to support learners with reading difficulties.
- Raising awareness of font size and page layouts will support pupils with visual impairments.
- Auditing the school library to ensure the availability of large font and easy read texts will improve access.
- Auditing signage around the school/setting to ensure that is accessible to all is a valuable exercise.
- Auditing the use of, and methods of displaying materials around the school/setting.

This will be done through:

- presentation in a section on the school/setting website open to all visitors to the site;

The Gillford Centre will achieve successful implementation of the accessibility plan with continued support in the areas of:

- providing training and awareness opportunities to staff, Governors and parents/carers on issues regarding equality and inclusion;
- providing targeted training for particular groups of pupils/staff;
- promoting collaboration through the provision of information and the sharing of good practice;
- encouraging liaison between other local schools/settings including special schools;
- seeking support/advice from outside the school/setting, from services, other agencies and organisations;
- ensuring that the school/setting is aware of all support services that provide advice to schools/settings and staff.

10. RELATED POLICIES

The Accessibility Plan should be read in conjunction with the following policies, strategies and documents:

- Curriculum Policies
- Single Equality Scheme/Objectives
- Staff Training and Development Plan
- Governor Training Plan
- Health & Safety
- Inclusion
- Special Educational Needs and Disabilities
- Educational Visits
- Whole School Behaviour
- Complaints Procedures

This page is intentionally blank for printing purposes

THE GILLFORD CENTRE ACCESSIBILITY PLAN 2021 - 2024

IMPROVING THE CURRICULUM ACCESS AT THE GILLFORD CENTRE

Target	Strategy	Outcome	Timeframe	Achievement
Review TA deployment	In review meetings with teaching assistants establish when they are available to support children each day that may be different to their current working hours	Adult support is available during key times that individual children may need support i.e. lunchtimes, PE lessons, extra-curricular activities.	Reviewed Annually	Children who need individual adult support to participate in some activities have access to this support.
Training for Awareness Raising of Disability Issues	Provide training for governors, staff, pupils and parents. Discuss perception of issues with staff to determine the current status of school.	Whole school community aware of issues relating to Access	July 2023	Society will benefit by a more inclusive school and social environment
Classrooms are optimally organised to promote the participation and independence of all pupils	Review and implement a preferred layout of furniture and equipment to support the learning process in individual class bases	Lessons start on time without the need to make adjustments to accommodate the needs of individual pupils	January 2023	Increase in access to the National Curriculum

--	--	--	--	--

THE GILLFORD CENTRE ACCESSIBILITY PLAN 2021 - 2024

IMPROVING THE PHYSICAL ACCESS AT THE GILLFORD CENTRE

An Asset Management Plan/Access Audit was carried out by _____ in _____ and a number of recommendations made:

AMP or AA Report Ref. (if relevant)	Item	Activity	Timescale	Cost £	Responsibility
N/A	Furniture & Fittings	Ensure that consideration is always given to disabled accessibility when purchasing new fittings or furniture	Ongoing		Staffing and finance sub committee

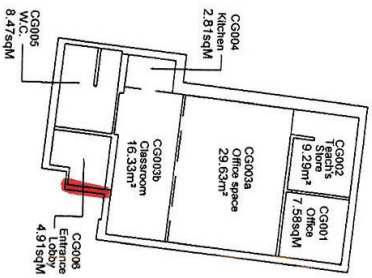
THE GILLFORD CENTRE ACCESSIBILITY PLAN 2021 - 2024

IMPROVING THE DELIVERY OF WRITTEN INFORMATION AT THE GILLFORD CENTRE

TARGET	STRATEGY	OUTCOME	TIMEFRAME	ACHIEVEMENT
Availability of written material in alternative formats	The school will make itself aware of the services available through the LA for converting written information into alternative formats.	The school will be able to provide written information in different formats when required for individual purposes	Ongoing	Delivery of information to disabled pupils improved
Make available school brochures, school newsletters and other information for parents in alternative formats	Review all current school publications and promote the availability in different formats for those that require it	All school information available for all	Summer 2022	Delivery of school information to parents and the local community improved
Survey parents/carers as to the quality of communication to seek their opinions as to how to improve.	Send out survey to parents regarding quality of communication.	School is more aware of the opinions of parents and acts on this.	Summer 2022	Parental opinion is surveyed and action taken appropriately.
Review documentation with a view of ensuring accessibility for pupils with visual impairment	Get advice from Hearing & Visually Impaired Service on alternative formats and use of IT software to produce customised materials.	All school information available for all	Autumn 2024	Delivery of school information to pupils & parents with visual difficulties improved.
Raise the awareness of adults working at and for the school on the importance of good communications systems.	Arrange training courses.	Awareness of target group raised	Ongoing from Autumn 2021	School is more effective in meeting the needs of pupils.

THIS PAGE IS INTENTIONALLY BLANK FOR PRINTING PURPOSES

HOSPITAL & HOME TUITION BUILDING

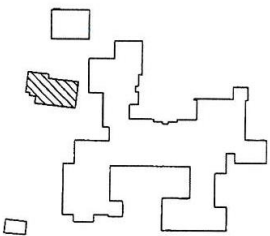


GROUND FLOOR PLAN

Gross Internal Area = 82.6m²

Gross External Area = 96.71m²

Home and Hospital
Individual Tuition Service



LOCATION PLAN



B	17/07/06	CG003a, 003b created	PA
A	26/07/06	CG003 Renamed, Footnote Added	AR

client			
job	CAD Drawings		
drawing	Gifford Centre Specialist Teaching Services		
scale	1:200 / 1:1250 @ A3	drawn	SDM
date	10/08/01	job no.	33048/E0109A/CG
	27/05/2000	rev.	B

This page is intentionally blank for printing purposes